

HAND-OPERATED TABLES



OLYMPUS

Natural - #13010-XX

Wenge - #13011-XX

The Olympus Flat Top offers a motorized lift for massage and body-work. Using a combination of manual and electric height adjustments, the Olympus provides the greatest height range in the industry, and is fully ADA compliant.

STANDARD BASE COLORS:



NATURAL



WENGE

STANDARD VINYL COLORS:



WHITE



ALMOND



CAMEL



BLACK



SLATE



PEBBLE

Options and Additions:

Natural - Shelf Upgrade 13010-SHELF

Wenge - Shelf Upgrade 13011-SHELF

Contour Face Cradle w/ pillow 41084-XX

Extra Foot Pedal Option 98-78019



The olympus treatment table comes with a black powder-coated lifting system with our wenge base and a white power-coated lifting system on our natural base.



Optional shelf upgrade



Adjust legs manually to set your desired starting height, and engage electric motor for additional adjustment.

TOP:

Top design

Foam

Upholstered top

Leg frame

One-piece upholstered top, rounded corners, three-layer foam

3" triple-wrap

30" width x 73" length x 6" total thickness of top + frame

20.5" width x 56.5" length x 5" thickness

BASE:

Outside leg spacing

Inside leg spacing

Base materials

Motorized lift

Adjustable leg extension

Height range

Leg recess

26" width x 56" length

21" width x 51" length

Maple legs with 3/4" veneer/plywood frame

Two, powder-coated carbon steel lift arms

1/4" leg bolts w/ 2 knobs, 11 holes, felt spacers, 2 rubber bumpers per leg

19" to 41" Double adjustable: 10" manual (ext. legs) plus 12" electric lift

4" recess on sides, 12" recess from head section

MOTORS & CONTROLS:

Lift mechanism

Power consumption

Control

220-volt model (international)

Lifting weight

Weight capacity

24V DC Linear actuator with AC control box / transformer, UL recognized

4 to 5 amps

Foot pedal; Optional 2nd foot pedal w/ Y-cable available

Optional

Lifting weight capacity 400 lbs.

Static weight capacity 500 lbs.

VINYL:

UltraSoft-Touch

Vinyl colors

Lightly textured, super-soft vinyl, fabric backed Almond, Camel, Pebble, Slate, White, Black.

OPTIONAL ACCESSORIES:

Face support

Foot extension

Contour FaceSpace for prone massage (sold separately)

Salon Footrest or Full Footrest

GUARANTEES:

Structure

Vinyl & foam

Mechanical/electrical

Optional wood shelf

5 yrs. on replacement parts and 1 yr. on labor**

2 yrs. on materials

2 yrs. on materials

1 yr. on materials

**Labor warranty for customers in USA only

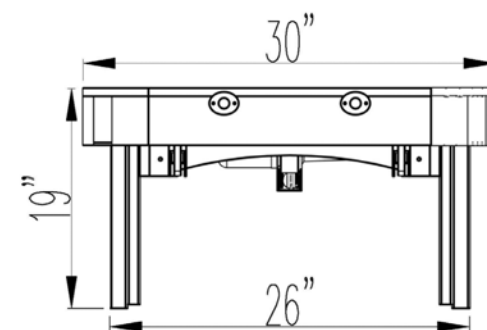
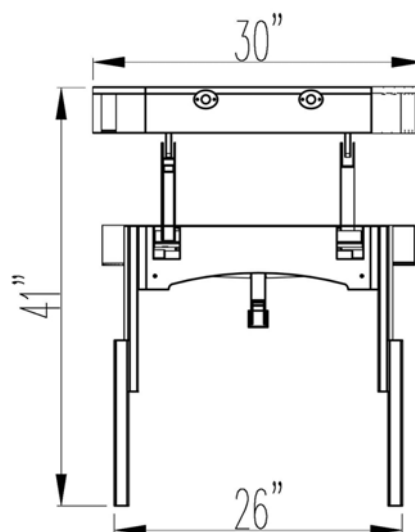
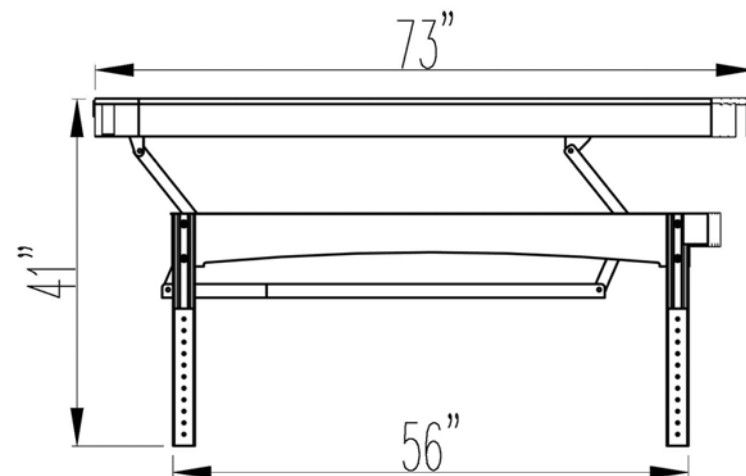
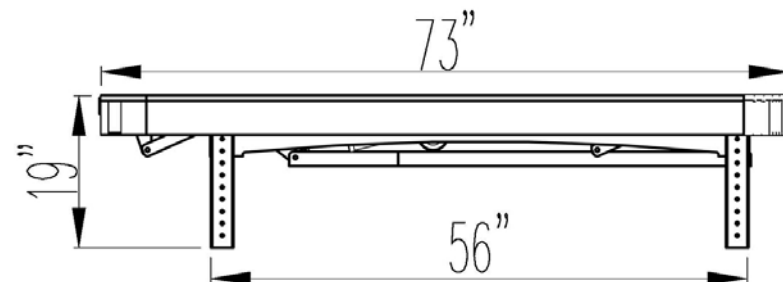
WEIGHTS:

Weight

Shipping weight

180 lbs.

250 lbs.



MOTORS & CONTROLS



MOTORS & CONTROLS